



eHealth – Reaching universal access to health

22 - 24 October, 2012 - Washington, DC - USA

Plenary Session 3: Integrating Scientific Evidence in Health Decisions

Local: Room A

Moderator: Luis Gabriel Cuervo, Pan American Health Organization

To connect to the virtual room

www.paho.org/virtual/CRICS9/RoomA

Webcast

www.livestream.com/paho

Information Needs for Management, Policy and Clinical Care

Zulma Ortiz - UNICEF, Argentina

How to Promote the Use of Research Findings for Clinical Practice and Health Systems Strengthening

Kay Dickersin - Johns Hopkins Bloomberg School of Public Health, USA

The Use of Evidence and the Health of Men and Women in Latin America and the Caribbean

Isabel Noguer - Pan American Health Organization

Peruvian Experience in the Application of International Initiatives for Supporting Decision Making in Health

Lely Solari - Instituto Nacional de Salud, Perú

The Role of Scientific Evidence in Health Policies: The decision making in local level

Jorge Barreto - Secretaria Municipal de Saúde de Piripiri, Brazil



Pedro Cahn by Theo Chalmers
© PAHO/WHO

www.paho.org/researchportal

www.paho.org/portalinvestigacion

Today's presentation

Plenary Session 3: Integrating Scientific Evidence in Health Decisions

Local: Room A

Moderator: Luis Gabriel Cuervo, Pan American Health Organization

To connect to the virtual room

www.paho.org/virtual/CRICS9/RoomA

Webcast

www.livestream.com/paho

Information Needs for Management, Policy and Clinical Care

Zulma Ortiz - UNICEF, Argentina

How to Promote the Use of Research Findings for Clinical Practice and Health Systems Strengthening

Kay Dickersin - Johns Hopkins Bloomberg School of Public Health, USA

The Use of Evidence and the Health of Men and Women in Latin America and the Caribbean

Isabel Nogueira - Pan American Health Organization

Peruvian Experience in the Application of International Initiatives for Supporting Decision Making in Health

Lely Solari - Instituto Nacional de Salud, Perú

The Role of Scientific Evidence in Health Policies: The decision making in local level

Jorge Barreto - Secretaria Municipal de Saúde de Piripiri, Brazil

It is precisely because we have very limited resources that we need more and better research; we need to choose wisely. It is precisely because we have such limited resources that we need to be organized with our research; we need to make the most of what is available

PAHO's Policy on Research for Health



**Pan American
Health
Organization**

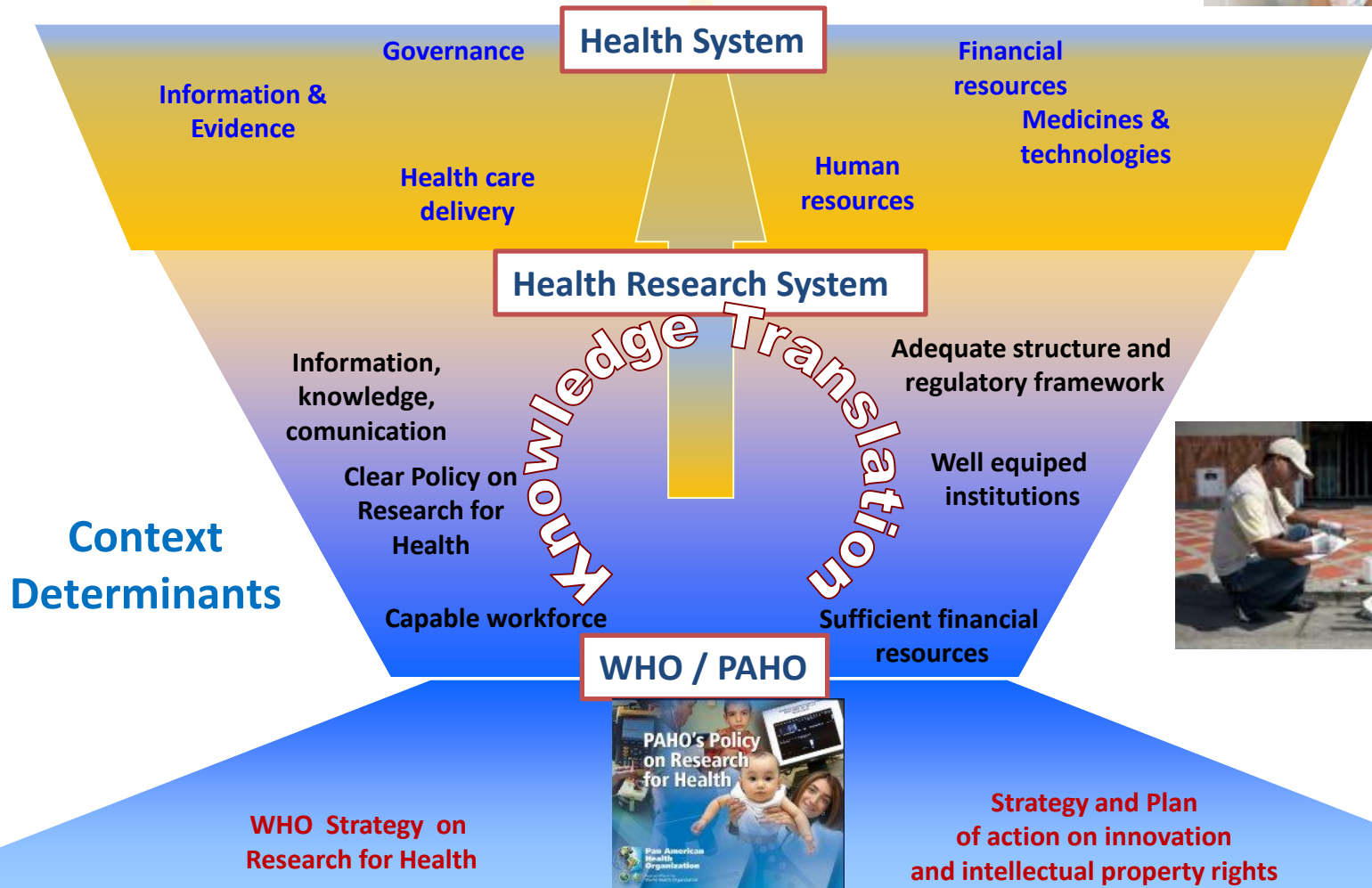


*Regional Office of the
World Health Organization*





Healthy people

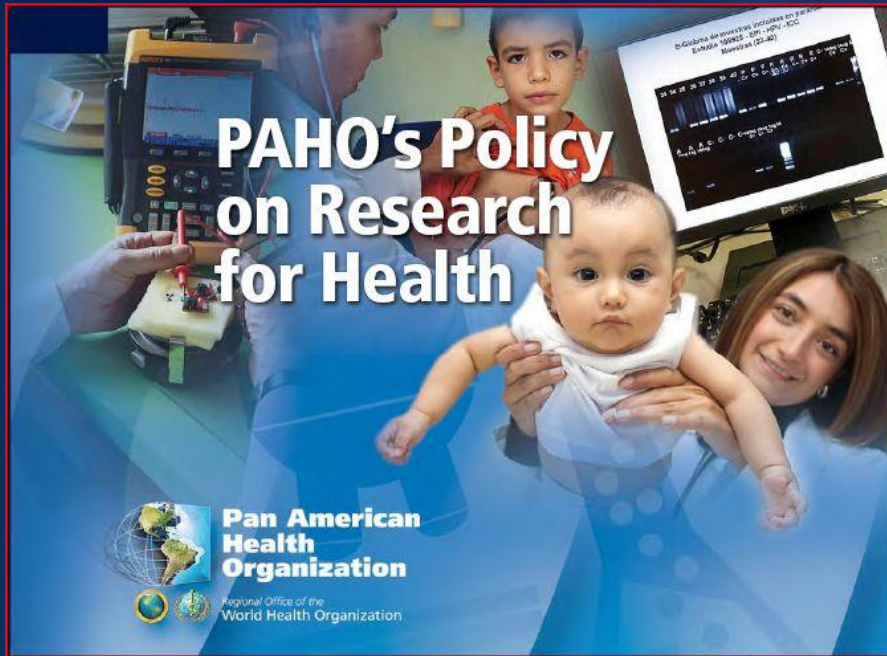


Authorities and other stakeholders.

Photos courtesy of Jane Dempster, [Art for Research project \(www.paho.org/portalinvestigacion\)](http://www.paho.org/portalinvestigacion)

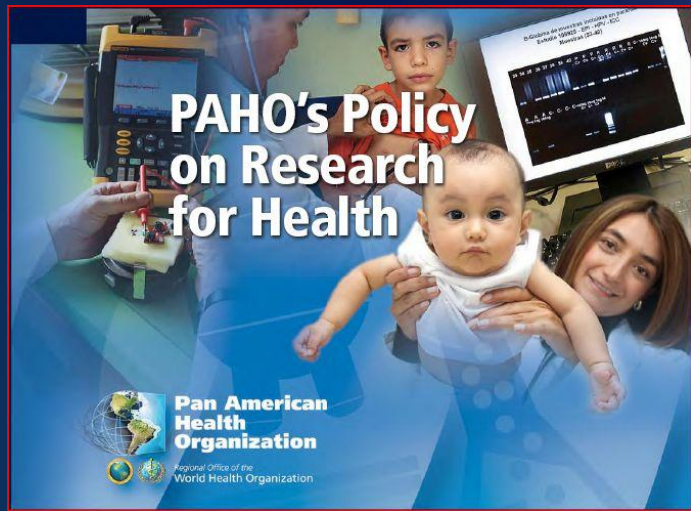
Gráfico concept by the Research Promotion & Development team of PAHO

Main Policy objectives



- Quality
- **Governance**
- Human Resources
- Partnership
- Standards
- Impact

Main Policy objectives



Six objectives

1. Promote the generation of relevant, ethical, and quality research.
2. Strengthen research governance and promote the definition of research agendas.
3. Improve competencies of and support for human resources involved in research.
4. Seek efficiencies and enhanced impact and appropriation of research through effective and strategic alliances, collaboration, and the building of public trust and engagement in research.
5. Foster best practices and enhanced standards for research.
6. Promote the dissemination and utilization of research findings.

Six objectives

1. Promote the generation of relevant, ethical, and quality research.
2. Strengthen research governance and promote the definition of research agendas.
3. Improve competencies of and support for human resources involved in research.
4. Seek efficiencies and enhanced impact and appropriation of research through effective and strategic alliances, collaboration, and the building of public trust and engagement in research.
5. Foster best practices and enhanced standards for research.
6. Promote the dissemination and utilization of research findings.



eHealth – Reaching universal access to health

22 - 24 October, 2012 - Washington, DC - USA

Plenary Session 3: Integrating Scientific Evidence in Health Decisions

Local: Room A

Moderator: Luis Gabriel Cuervo, Pan American Health Organization

To connect to the virtual room

www.paho.org/virtual/CRICS9/RoomA

Webcast

www.livestream.com/paho

Information Needs for Management, Policy and Clinical Care

Zulma Ortiz - UNICEF, Argentina

How to Promote the Use of Research Findings for Clinical Practice and Health Systems Strengthening

Kay Dickersin - Johns Hopkins Bloomberg School of Public Health, USA

The Use of Evidence and the Health of Men and Women in Latin America and the Caribbean

Isabel Noguer - Pan American Health Organization

Peruvian Experience in the Application of International Initiatives for Supporting Decision Making in Health

Lely Solari - Instituto Nacional de Salud, Perú

The Role of Scientific Evidence in Health Policies: The decision making in local level

Jorge Barreto - Secretaria Municipal de Saúde de Piripiri, Brazil



Pedro Cahn by Theo Chalmers
© PAHO/WHO

www.paho.org/researchportal

www.paho.org/portalinvestigacion